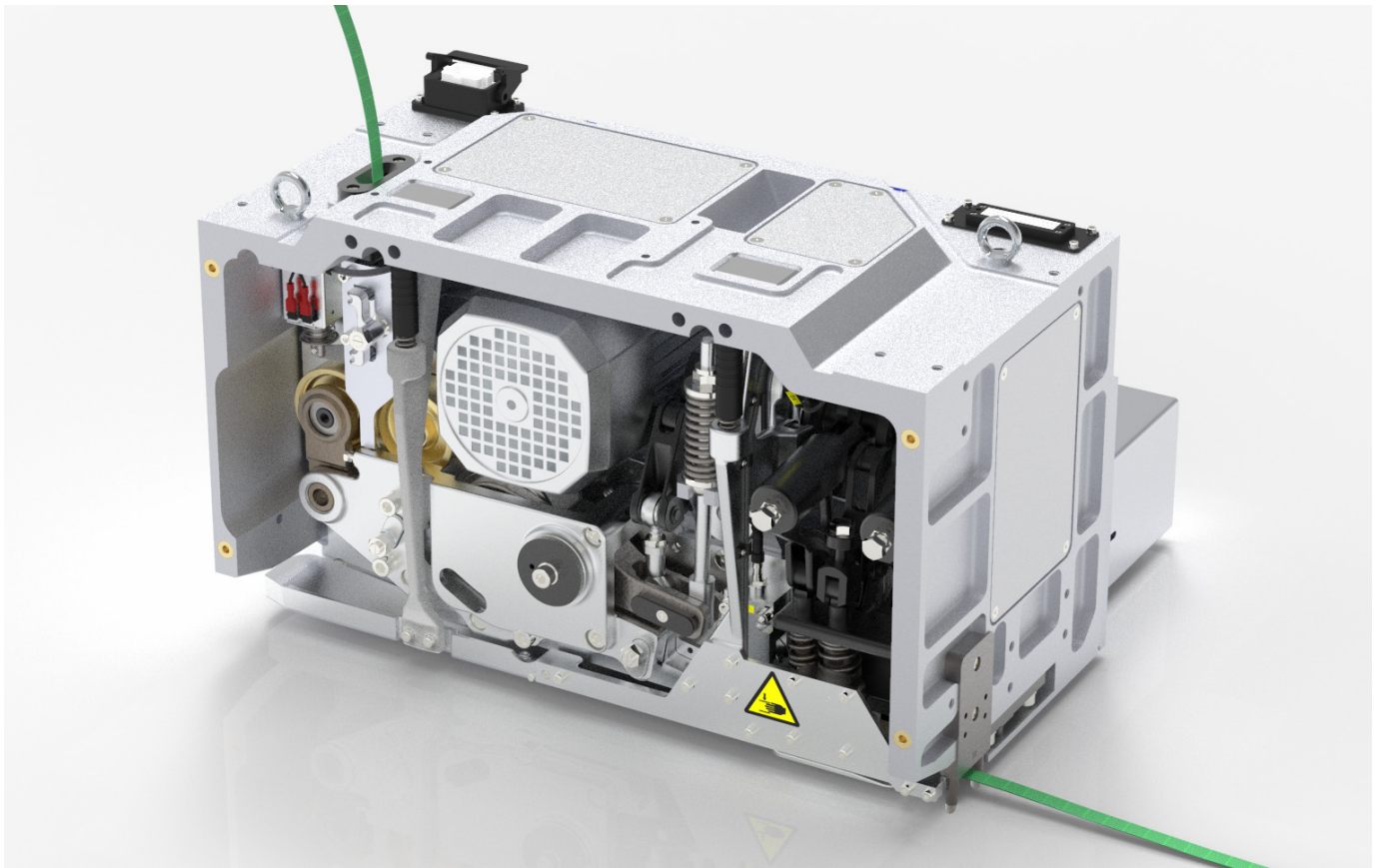


High tension, 19 – 32 mm, friction welding, round packages, aluminium and steel coil strapping



Technical data for strapping head MH611

Strap qualities	Polyester (PET)	
Strap dimensions:	widths	19,0 – 32,0 mm / ¾ – 1 ¼"
	thickness	0,60 – 1,53 mm / 0.024 – 0.060"
Strapping head type	Electric	
Sealing method	friction welding	
Seal strength	up to 80% (depending on the strap quality)	
Strap tension, adjustable	2.000 – 7.000 N / 440 - 1,570 lbs	
Feed/retract speed	5,3 m/s / 17.3 ft/s	
Tension speed	105 mm/s / 0.34 ft/s	
Min. pack face*	170 mm / 6.7" Ø 500 mm / 20" - Ø 2 x 120 mm / 2 x 4.7"	
Power supply	230V / 400V Δ / Y – 3PE/50Hz	
Power	0,55 kW	
Dimensions (over all)	L 616,5 x W 547 x H 455 mm / L 24.3 x W21.5 x 17.9"	
Weight	124 kg / 273 lbs	

* Min. pack face depends on many factors. For critical dimensions please get in touch with your FROMM dealer.

Chart of types, strapping head MH611

Item No.	Model	Strap widths		Strap thicknesses		Max. Tension	
		mm	inch	mm	inch	N	lbs
47.5621	MH611/19/0.80-1.53/7.0/PET	19	¾	0,80-1,53	.031-.060	7.000	1,570
47.5623	MH611/25/0.60-1.35/7.0/PET	25	1	0,60-1,35	.024-.053	7.000	1,570
47.5625	MH611/32/0.60-1.35/7.0/PET	32	1 ¼	0,60-1,35	.024-.053	7.000	1,570

Features

- Suitable for round packages
- High strap tension. Adjustable up to 7.000 N (1,570 lbs)
- One piece aluminium cast housing
- Compact and modular design
- Well proven separate feeding, tensioning and friction weld sealing systems
- Handles 19, 25 or 32 mm strap
- Strap guide open feature
- Use of state-of-the-art manufacturing, controlling and material technology
- Three side suspension attachment points and quick connectors, for easy integration
- Long life and maintenance friendly, resulting in high availability
- Mechanical pack detecting sensor (option)
- Thinner or rubber coated base protection plate (option)
- Cycle counter inside the head (option)
- Dust cleaning system (option)
- Head suspension with power floating system/ tension compensation (option)
- Environment temperature monitoring for consistent seal efficiency(option)

Perfect fit for

- Round packages, in particular (HD) Coil strapping in the steel, aluminium and construction industry
- Horizontal and vertical stand-alone strapping machines or installation in integrated packaging lines.
- Static or moving machines
- Top, side or bottom seal positions
- Strapping of flat, irregular, small and round packages